

1

Loma  
UGA

ALTO

FR  
peau**Alma**

Alma sotir uga is vila aname alto ke ayik is jontik sulem, badakirapafa ( dem titeon kenalakirapaf biy is ticeon nendasa almaga ). Va tenekara va idul is paelpera is uzatca soravaldar.

alma - cot - im - fortley - ikuza - divcepa

2

Loma  
UGA

ALTO

FR  
chair**Cot**

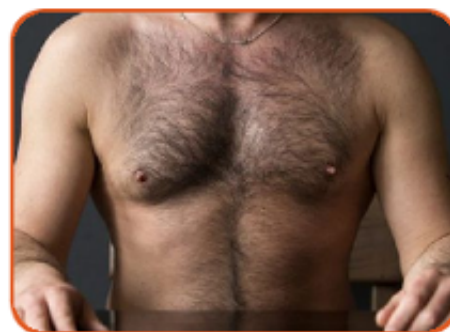
Nelkafa uga ke ayafa ok sulemafo alto, gijoton dem reltafa layta. Cot tir jadif trogarn solve **atela** tir loon aptaf gu blot.

alma - cot - im - fortley - ikuza - divcepa

3

Loma  
UGA

ALTO

FR  
poils, pelage**Im**

Im sotir femaf warzeks ke almaga, pakon gijoton dem reltafa layta. Im sotir Aptaf ravlem ta gedrafa iminda dere krulded : usuk is pauraem is wolteem is kampa.

alma - cot - im - fortley - ikuza - divcepa

4

Loma  
UGA

ALTO

FR  
sang**Fortey**

Kerafa vilafa plawa, dun konisa koo kenaleem koe eem ke alto ke ayik is jontik sulem. Fortey va bli sogestur ise tuke lejasa takra sofir.

alma - cot - im - fortley - ikuza - divcepa

5

Loma  
UGA

ALTO

FR  
larne(s)**Ikuza**

Rengafa remawisa eipkirafa plawa divtraspusa mal iteem nope altokafa kranavera ok kontera. Ikuza va itapoz dere guabdar ise jupar da va zunes ugolk di divplekur.

alma - cot - im - fortley - ikuza - divcepa

6

Loma  
UGA

ALTO

FR  
excréments, caca**Divcepa**

Delafa ik plawafa uga tuwavn divnocana gan ayalto, sotisa zavzaks ke logara. **Divcepa** sotir ravlem ta ayik, voxen ravlemack ta sulem tir to **divluja**.

alma - cot - im - fortley - ikuza - divcepa

1

Loma  
SULEM

ALTO

FR  
aile(s)**Wilt / wilteem**

Wilt sotir divefa vola sye talasisa va yona suleminda. Ke cugi zveri, **wilteem** ( toloy ) sotir beweem. Dere ke vesnol tis moukdunol. Wilt ke beza ( 2 tola = 4 ) sotir divefi yupki.

wilt - ault - pujek - inia - oral - bruxa

2

Loma  
SULEM

ALTO

FR  
queue**Ault**

Sotir bent ke cug putcdunol ise bene kafkeem sotigir. Dakisi ki ke torestava ise va nuyaf aptaf putceem kaike woyail sodir.

wilt - ault - pujek - inia - oral - bruxa