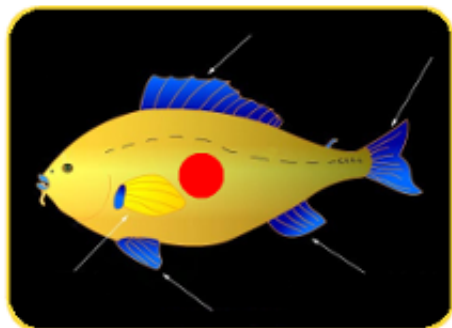


3

Loma  
SULEMFR  
nageoire(s)

Pujek / pujekeem



**Pujekeem** : eem dem pujek tis olyakiraf bewotaf bent bene jivot is ault ke kabay ik biraf moukdunol sotalasis. Ota ke pujek kare katca tir amidafa.

wilt - ault - pujek - inia - oral - bruxa

4

Loma  
SULEMFR  
patte(s)

Inia / inieem



**Inieem** : inia tolakoron sotid solawesa bewa jupasa va lanira ke jontik sulem. Koti iniaki va aptaf yolt gidir. Ota ke inia sotir amidafa gu katca.

wilt - ault - pujek - inia - oral - bruxa

5

Loma  
SULEMFR  
bec

Oral



Wexayesa otsa ke taka ke zveri, dem toloya solawesa broxa, vas art is talgabolk ta malgestura ik ervo ta rojura ik tcabanera. Jontika amidafa oralinda sokruled.

wilt - ault - pujek - inia - oral - bruxa

6

Loma  
SULEMFR  
plum(ag)e

Bruxa / bruxeem



**Bruxeem** : eem dem bruxa tisa laytukaf bent gidis va otsakiraf vaf colkay is krilaf lukasteem. Bruxeem bene alto ke zveri jontikote sotigir ise talasir ise nendar.

wilt - ault - pujek - inia - oral - bruxa

1

Loma  
AAL / RUXAFR  
racine(s)

Zae / zaeem



*Kontan kazawas va "Zae" liwa bas ar ombusik, va tenturama volunt gokalir.  
Djay...!!*

zæe - ulim - gama - toa - imwa - enga

2

Loma  
AAL / RUXAFR  
tronc

Ulim



*Kontan kazawas va "Ulim" liwa bas ar ombusik, va tenturama volunt gokalir.  
Djay...!!*

zæe - ulim - gama - toa - imwa - enga

3

Loma  
AAL / RUXAFR  
branche(s)

Gama / gameem



*Kontan kazawas va "Gama" liwa bas ar ombusik, va tenturama volunt gokalir.  
Djay...!!*

zæe - ulim - gama - toa - imwa - enga

4

Loma  
AAL / RUXAFR  
feuill(ag)e

Toa / toeem



*Kontan kazawas va "Toa" liwa bas ar ombusik, va tenturama volunt gokalir.  
Djay...!!*

zæe - ulim - gama - toa - imwa - enga